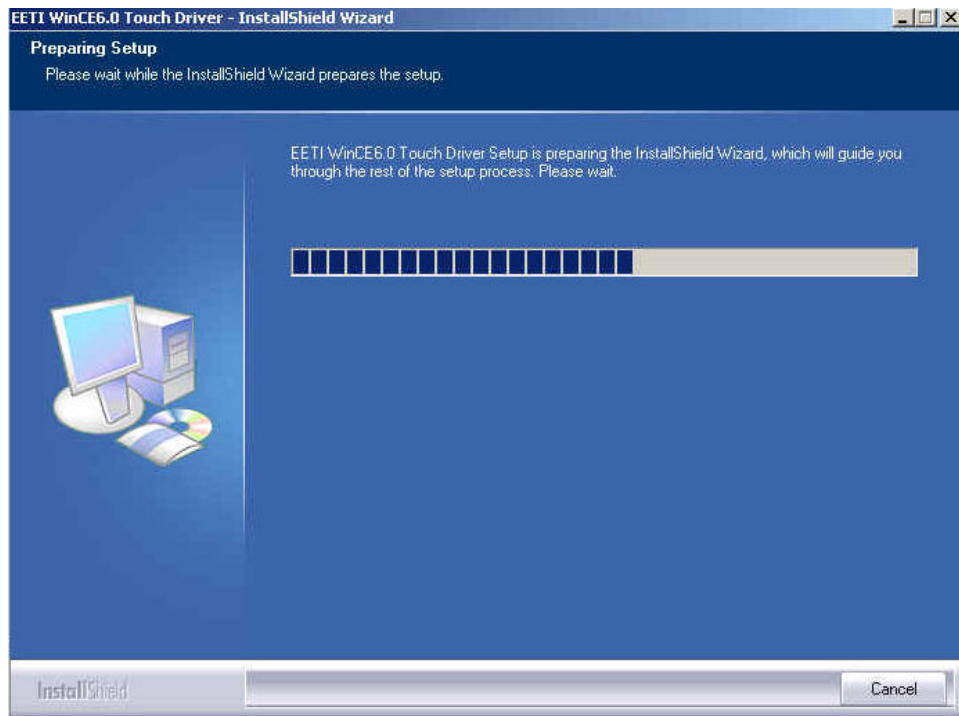


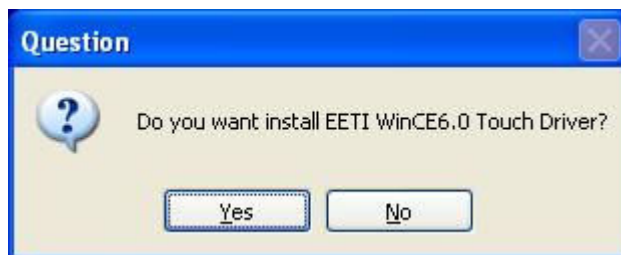
# EETI WinCE Touch Driver Installation Guide

Operation System: Windows CE .6.0

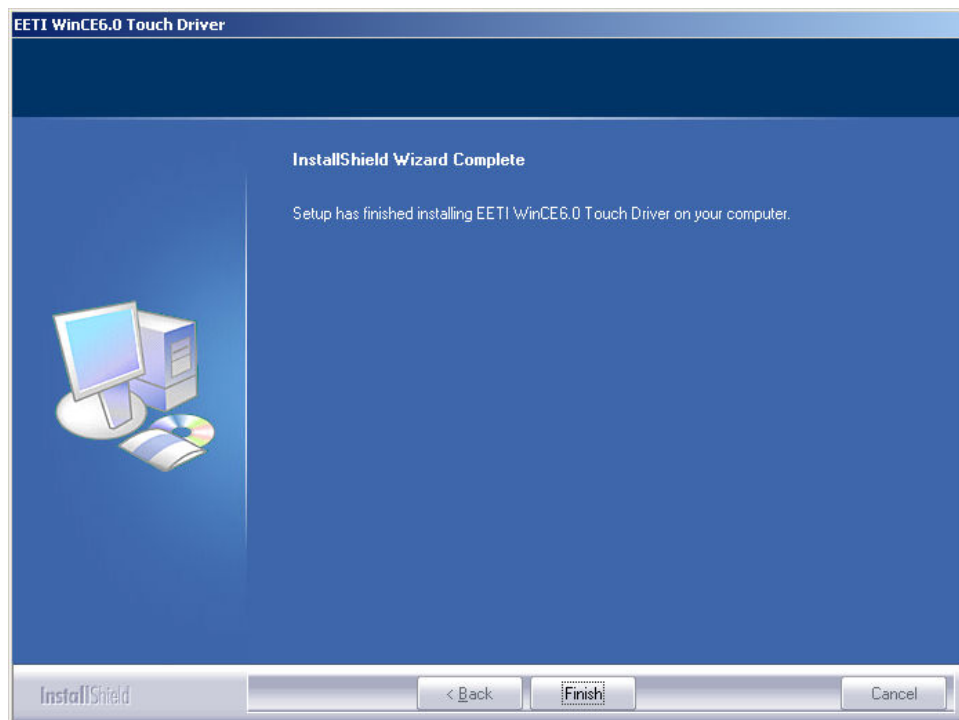
1. Execute setup.exe, you will see the installation window.



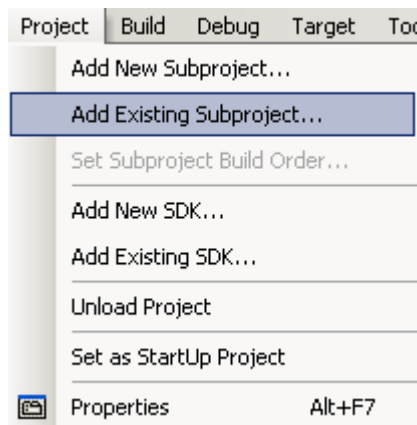
2. Select Yes to continue the installation, or select No to cancel it.



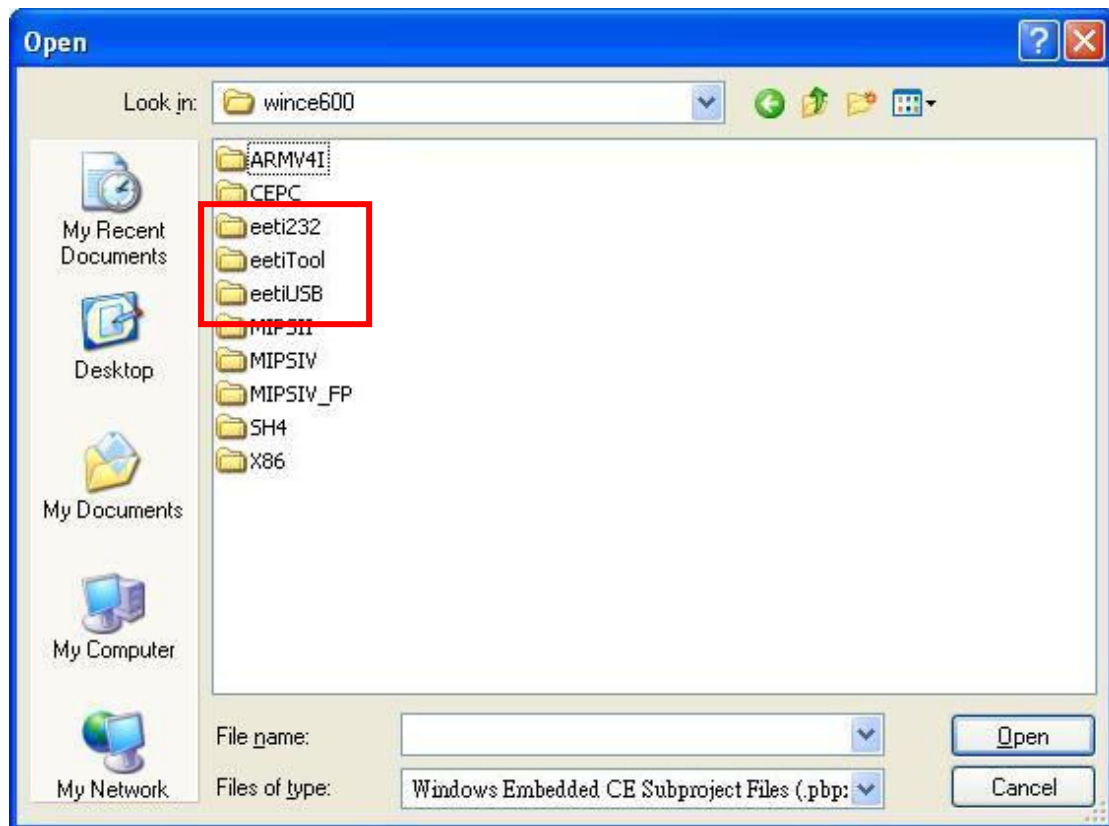
3. When installation successfully finish, you will see the window. Click Finish to close the installation window.



4. Launch Visual Studio 2005 with Platform Builder WinCE6.0. Open your OSDesign which you want to install EETI Touch Driver.
5. Select Project → Add Existing Subproject



6. Switch the folder to C:\EETICEDB\wince600



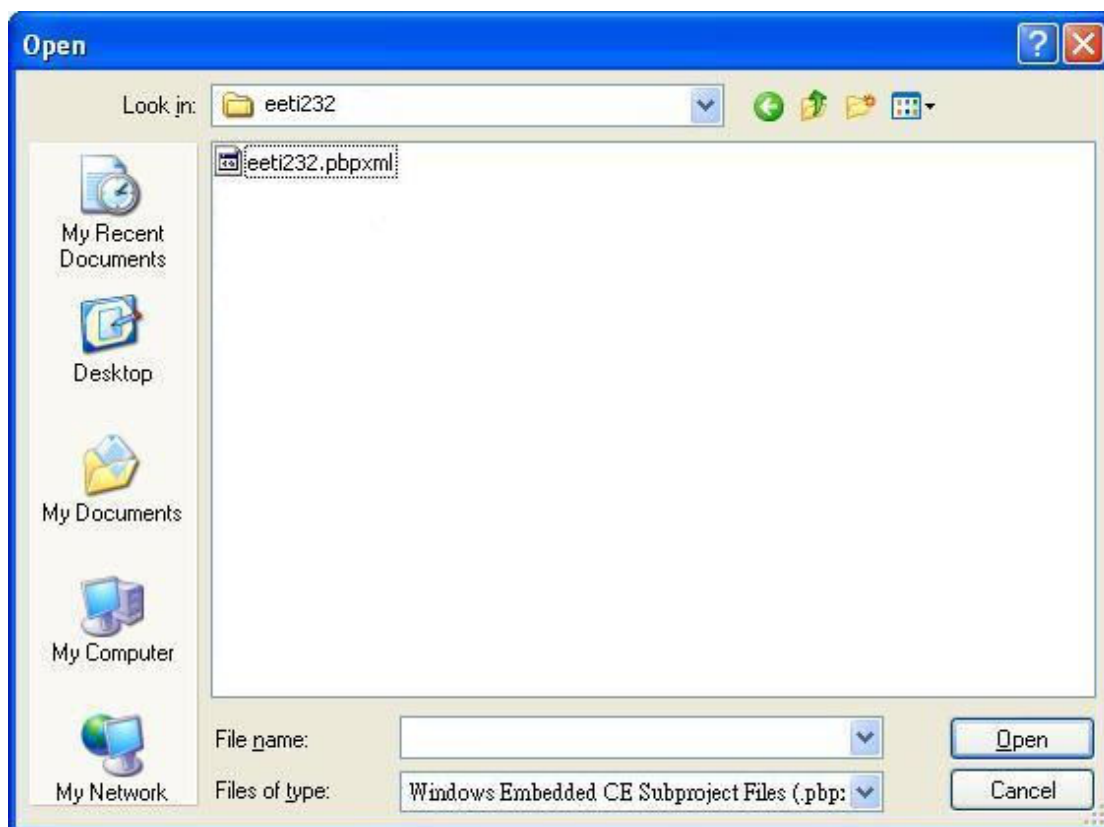
7. To add subprojects into your OSDesign, Choose the pbpxml file under different folder. (i.e. eeti232, eetiTool and eetiUSB)

**[For USB Controller]**

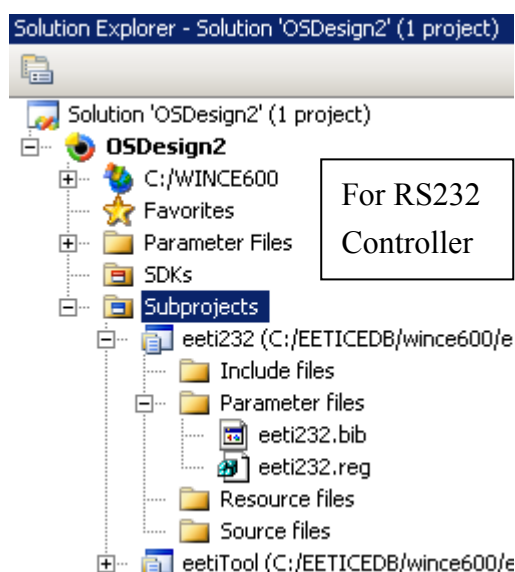
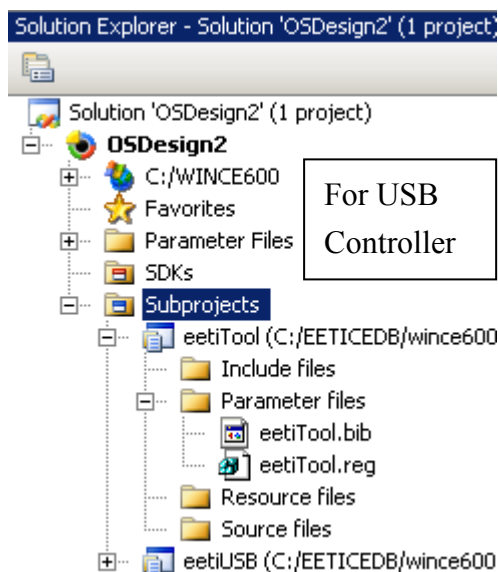
Add **eeti Tool** and **eeti USB** subprojects into your OSDesign

**[For RS232 Controller]**

Add **eeti Tool** and **eeti 232** subprojects into your OSDesign



8. After you add catalog items, you will find the subprojects inside your OSDesign.



9. Select Build → Make Run-Time Image to make the new image.

Notes:

1. [For USB Controller] Select the UHCI or OHCI USB Host Controller driver into your platform which supported by the target device. Check the USB mouse can go well at the same port. Select the "Mouse" into your platform. This can be found

in:Catalog Item Window, add “Core OS\CEBASE\Shell and User Interface\User Interface\Mouse”

2. [For RS232 Controller] Select the COM port which touch device is using, please modify eeti232.reg

[HKEY\_LOCAL\_MACHINE\Drivers\BuiltIn\TouchKit1]

"Dll"="TouchKit.dll"

"Order"=dword:FF

"Prefix"="TKT"

"Index"=dword:00000001

"Context"=dword:1; → This is the COM Port setting.

3. You can uninstall the catalog items in platform builder by execute setup.exe again.
4. Note: If you wish to disable right button simulation, please do the following
  - 4-1: Modify eetiTool.reg: set RBSIZE = 0
  - 4-2: Remove AYGShell component in your OS Design. It locates under: Core OS  
-> CEBASE -> Shell and User Interface -> Shell -> AYGShell API Set

Driver Registry Settings:

Settings for eetiTool.reg:

[HKEY\_LOCAL\_MACHINE\Drivers\TouchKit]

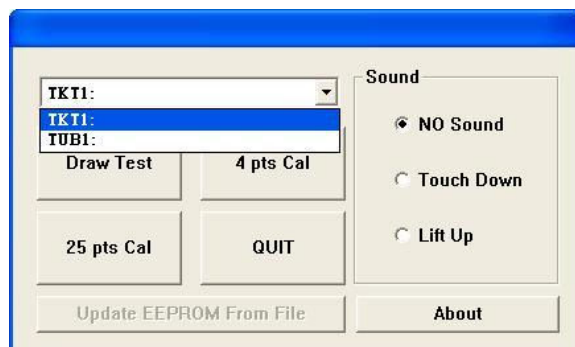
Registry Key	Type	Description
RBSIZE	dword	set scale that will be treated as the same point, $x\text{-coordinate regin(pixel)} = (\text{RBSize} / 65535) * x\text{-coordinate resolution}$ set RBSize = 0 can disable right button
RBTIME	dword	set how long the same point pressed will treated as right button. The unit is $10^{-7}$ second.
FLAGS	dword	set 0x1 software filter enable set 0x3000 update EEPROM function enable set 0x100 to enable the check rotation function
SoundType	dword	SoundType = 0 is no sound SoundType = 1 is Beep in touch down. SoundType = 2 is Beep in lift off.
EdgeCompEn	dword	Edge compensation enable
EdgeCompUp	dword	Edge compensation upper bound parameter
EdgeCompDown	dword	Edge compensation lower bound parameter
EdgeCompLeft	dword	Edge compensation left bound parameter
EdgeCompRight	dword	Edge compensation right bound parameter
HalfVGA	dword	Touch mapping to screen parameter: HalfVGA=1: touch only on upper half of screen HalfVGA=2: touch only on lower half of screen HalfVGA=3: touch only on right half of screen HalfVGA=4: touch only on left half of screen
Baud	dword	RS232 baud rate setting:

## EETI Touch Utility User Manual

The main utility of EETI touch driver is called eGalaxTouch.exe.

Users can launch the utility by following step:

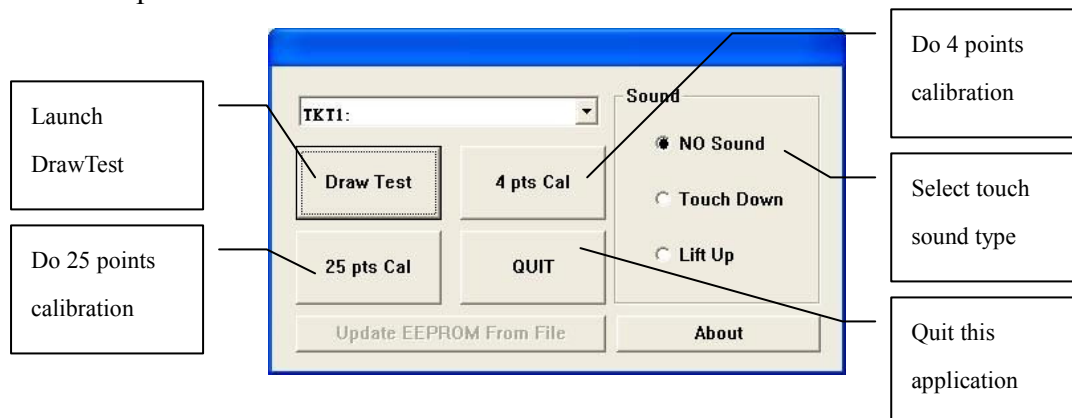
1. Start Menu → Run
2. Type eGalaxTouch and select OK
3. The eGalaxTouch utility is showed as belows



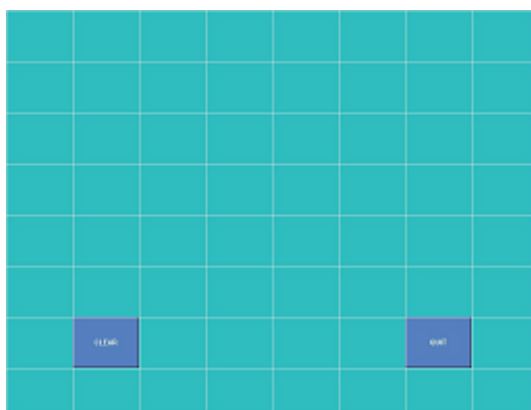
If you are using RS232 interface touch controller, please select TKT1:

If you are using USB interface touch controller, please select TUB1:

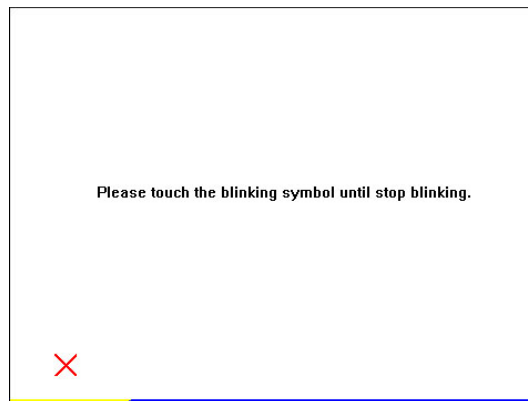
The description of eGalaxTouch buttons:



The DrawTest application is an application to let user to do drawing test.



The 4 / 25 points calibration utility is used to do calibration, users needs to touch the cross points continuously until the cross stop blinking.



If developers need to launch drawtest or calibration utility without eGalaxTouch utility, please passing the parameters according to following information:

Note that the application Calbration.exe without “i”.

For RS232 interface:

Drawtest.exe “TKT1:”

Calbration.exe “TKT1: P4”

Calbration.exe “TKT1: P9”

Calbration.exe “TKT1: P25”

For USB interface:

Drawtest.exe “TUB1:”

Calbration.exe “TUB1: P4”

Calbration.exe “TUB1: P9”

Calbration.exe “TUB1: P25”

Developers can use ShellExecuteEx API and passing corresponding parameter to achieve the feature.